



# Modern Modular Houses



ABAR SAZEH FARAJI

# Prefabricated House

## AbarSazeh Faraji

The first and only manufacturer of bolt-connected prefabricated buildings in Iran and the Middle East

Founder and originator of ASF bolt-connected structures in Iran



01

### Table of Contents

Introduction	Introduction to ASF Bolt-Connected Structures	03-04
Chapter One	Villa and Residential	05-14
Chapter Two	Administrative	15-23
Chapter Three	Retail	24-28
Chapter Four	Public Facilities	29-33
Chapter Five	Educational Facilities	34-37
Chapter Six	Township Development	38-41
Chapter Seven	Roof Construction	-
Chapter Eight	Selected Client Projects	42-51
Chapter Nine	Participation in Iran's International Exhibitions	52-53

02

## What is an ASF Prefabricated Structure?

ASF (Advanced Faraji Structure) is a cutting-edge steel construction system designed for lightweight building applications with exceptional strength and durability. The structural framework is manufactured using rolled steel sheets and profiles through advanced forming, laser cutting, punching, and industrial welding technologies.

These components are assembled using chambered locking bolts—commonly used in heavy machinery and automotive industries—ensuring secure and efficient connections. Each square meter of ASF structure can be installed and assembled in just five minutes.

ASF systems are certified under U.S. standards and CE regulations in Europe. Structural resistance documentation is currently under review by the Iranian Housing and Urban Development Research Center.

## Advantages of Choosing ASF Over Conventional Structures

On-site construction and assembly completed within just 72 hours

Thermal, acoustic, moisture, and weather insulation

Engineered structure aligned with cutting-edge global technologies

Applicable up to 3 floors, including roof gardens and terraces

Transportable to remote, mountainous, and rooftop locations

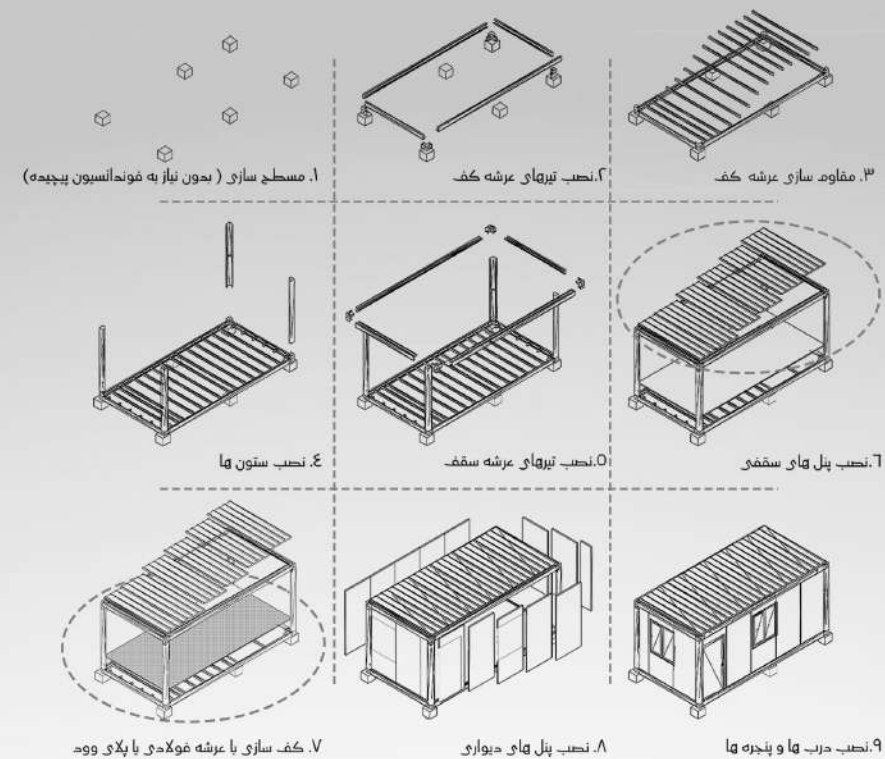
Energy-efficient design with significant cost savings

No need for time-consuming and costly foundation work

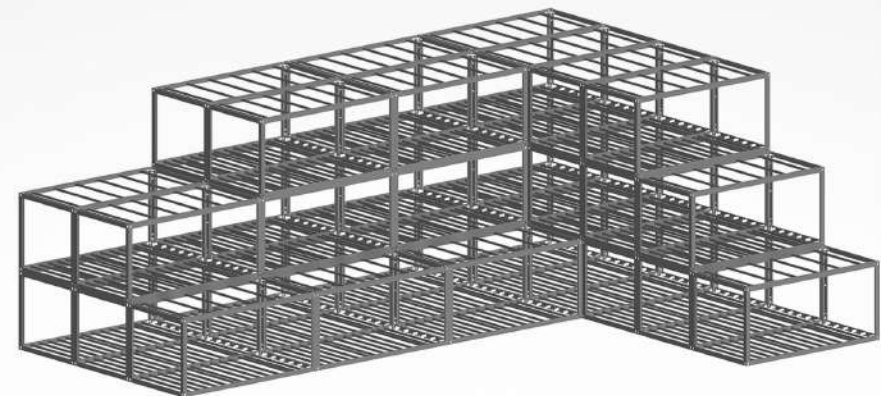
The only earthquake-resistant structural system

Fully demountable and relocatable up to five times

Abr Sazeh, through its architectural expertise and the construction of prefabricated, bolt-connected, and rapidly deployable homes and villas, strives to lead innovation in this field. By incorporating the latest amenities and implementing diverse design concepts, the company aims to set new standards in modern construction and achieve maximum customer satisfaction in line with the world's most advanced methods and certifications.



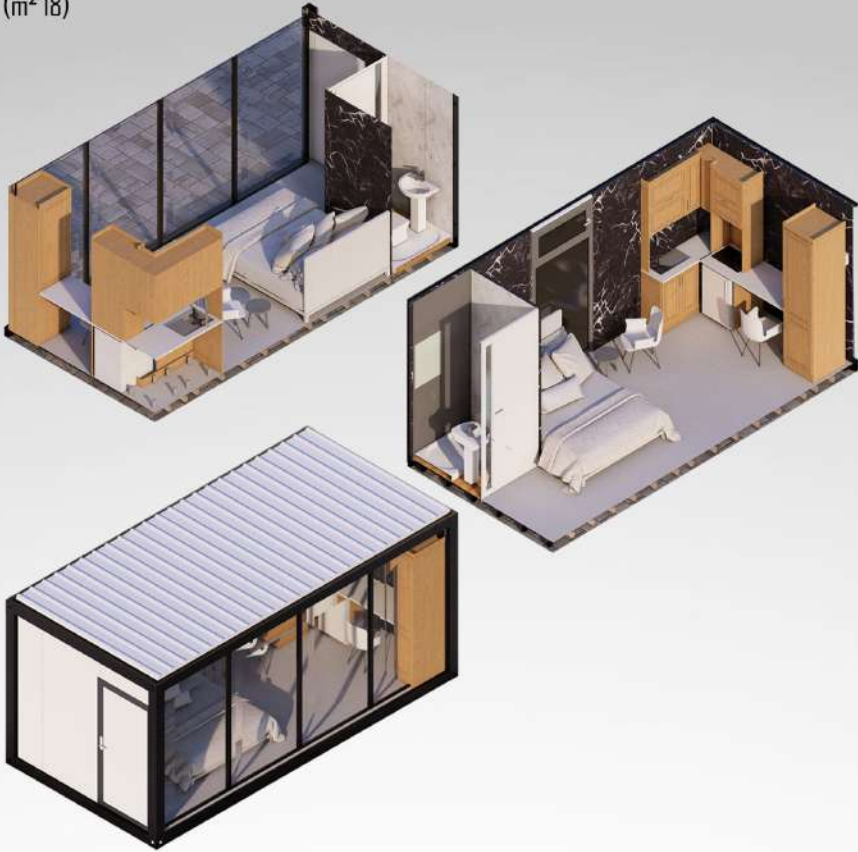
## Structural Layout for Up to Three Floors





Economic Structural System ++ (Glass)	06
Casita Studio Suite	07
Casita Cabin	08
One-Bedroom Houses	09-11
Two-Bedroom Houses	12-14

Economic Structural System ++ (Glass)  
(m<sup>2</sup> 18)



Economic Structural System ++ (Glass)

Number of Units	: 1
Dimensions of Each Unit	: m 2.80 × m 3 × m 6
Total Area	: m <sup>2</sup> 18
Net Weight	: kg 2,500
Facilities / Amenities	: Master bathroom + Kitchen
Function / Usage	: Suite – Garden house – Hotel accommodation, etc
Price	: ...

### Casita Studio Suite (m<sup>2</sup> 36)



#### Casita Studio Suite

Number of Units	: 2
Dimensions of Each Unit	: m 2.80 × m 3 × m 6
Total Area	: m <sup>2</sup> 36
Net Weight	: 2500kg*2=5000kg
Facilities / Amenities	: Makster bathroom + Kitchen + Living room
Function / Usage	: Suite – Garden House – Hotel Accommodation, etc
Price	: ...

### Casita Cabin (m<sup>2</sup> 36)



#### Casita Cabin

Number of Units	: 2
Dimensions of Each Unit	: m 2.80 × m 3 × m 6
Total Area	: m <sup>2</sup> 36
Net Weight	: 2500kg*2=5000kg
Facilities / Amenities	: Makster bathroom + Kitchen+ Bedroom + Living room
Function / Usage	: Residential
Price	: ...

One-Bedroom Houses Type1  
(m<sup>2</sup> 54)



One-Bedroom Houses Type1

Number of Units	: 3
Dimensions of Each Unit	: m 2.80 × m 3 × m 6
Total Area	: m <sup>2</sup> 54
Net Weight	: 2500kg*3=7500kg
Facilities / Amenities	: Master bathroom + Kitchen+ Bedroom + Living room
Function / Usage	: Garden house – Villa – etc
Price	: ...

One-Bedroom Houses Type2  
(m<sup>2</sup> 54)



One-Bedroom Houses Type2

Number of Units	: 3
Dimensions of Each Unit	: m 2.80 × m 3 × m 6
Total Area	: m <sup>2</sup> 54
Net Weight	: 2500kg*3=7500kg
Facilities / Amenities	: Master bathroom + Kitchen+ Bedroom + Living room
Function / Usage	: Garden house – Villa – etc
Price	: ...



One-Bedroom Houses Type3  
(m<sup>2</sup> 54)



One-Bedroom Houses Type3

Number of Units	: 3
Dimensions of Each Unit	: m 2.80 × m 3 × m 6
Total Area	: m <sup>2</sup> 54
Net Weight	: 2500kg*3=7500kg
Facilities / Amenities	: Master bathroom + Kitchen+ Bedroom + Living room+Terrace
Function / Usage	: Garden house – Villa – etc
Price	: ...

Two-Bedroom Houses  
(m<sup>2</sup> 72)



Two-Bedroom Houses

Number of Units	: 4
Dimensions of Each Unit	: m 2.80 × m 3 × m 6
Total Area	: m <sup>2</sup> 72
Net Weight	: 2500kg*4=10000kg
Facilities / Amenities	: Master bathroom + Kitchen+ Two Bedrooms + Living room
Function / Usage	: Residential
Price	: ...

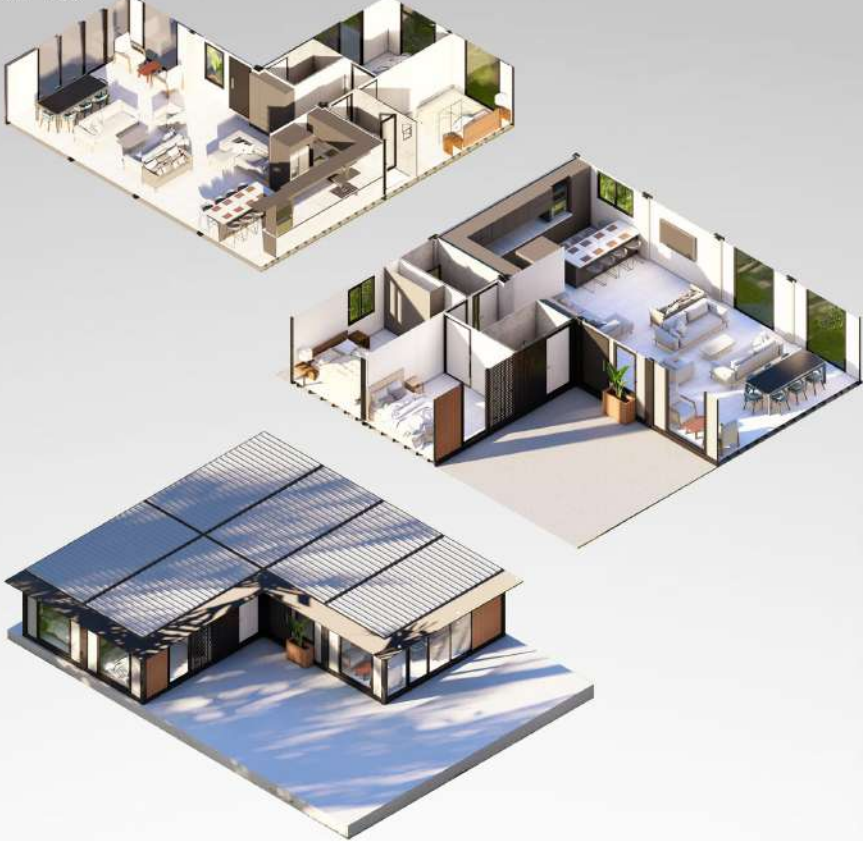
Two-Bedroom Houses  
(m<sup>2</sup> 90)



Two-Bedroom Houses

Number of Units	: 5
Dimensions of Each Unit	: m 2.80 × m 3 × m 6
Total Area	: m <sup>2</sup> 90
Net Weight	: 2500kg*5=12500kg
Facilities / Amenities	: Master bathroom + Kitchen+ Two Bedrooms + Living room
Function / Usage	: Residential
Price	: ...

Two-Bedroom Houses  
(m<sup>2</sup> 108)



Two-Bedroom Houses

Number of Units	: 6
Dimensions of Each Unit	: m 2.80 × m 3 × m 6
Total Area	: m <sup>2</sup> 108
Net Weight	: 2500kg*6=15000kg
Facilities / Amenities	: Master bathroom + Kitchen+ Two Bedrooms + Living room
Function / Usage	: Residential
Price	: ...



Economy Office	16
Economy Office +	17
Casita Office	18
Conference Room	19
Two-Storey Office	20
Staff Dormitory	21
Administrative – Governmental	22
Flat Office	23

Economy Office  
(m<sup>2</sup> 18)



Economy Office	
Number of Units	: 1
Dimensions of Each Unit	: m 2.80 × m 3 × m 6
Total Area	: m <sup>2</sup> 18
Net Weight	: kg 2.500
Facilities / Amenities	: -
Function / Usage	: Office – Construction Site Facilities, etc
Price	: ...

Economy Office +  
(m<sup>2</sup> 18)



Economy Office +

Number of Units	: 1
Dimensions of Each Unit	: m 2.80 × m 3 × m 6
Total Area	: m <sup>2</sup> 18
Net Weight	: kg 2,500
Facilities / Amenities	: Bathroom
Function / Usage	: Office – Construction Site Facilities, etc
Price	: ...

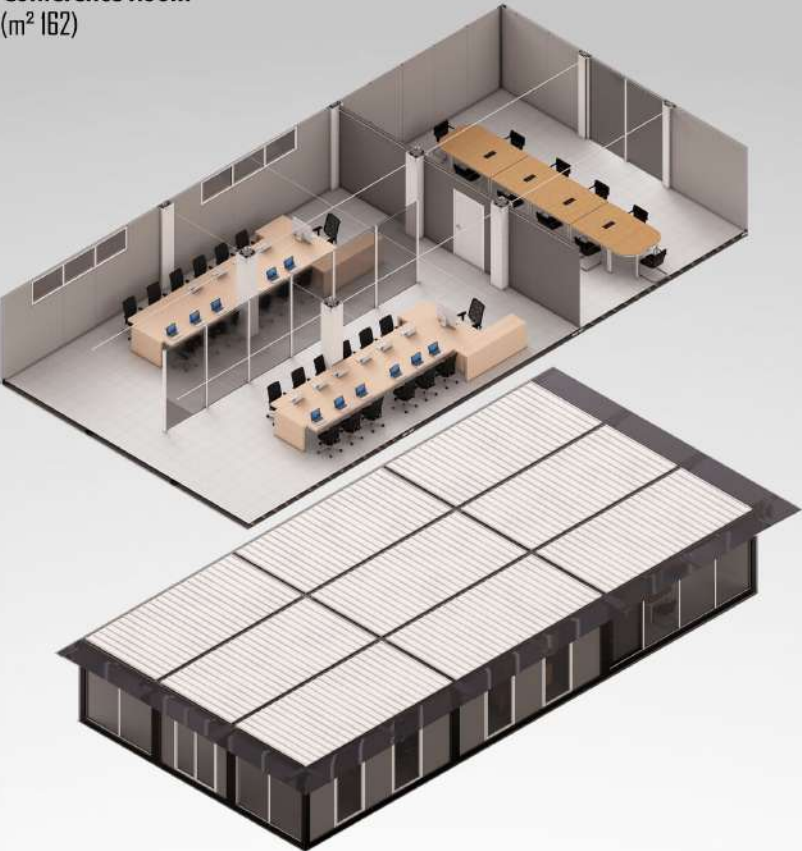
Casita Office  
(m<sup>2</sup> 36)



Casita Office

Number of Units	: 2
Dimensions of Each Unit	: m 2.80 × m 3 × m 6
Total Area	: m <sup>2</sup> 36
Net Weight	: 2500kg*2=5000kg
Facilities / Amenities	: Master bathroom + Kitchen + Hall
Function / Usage	: Administrative
Price	: ...

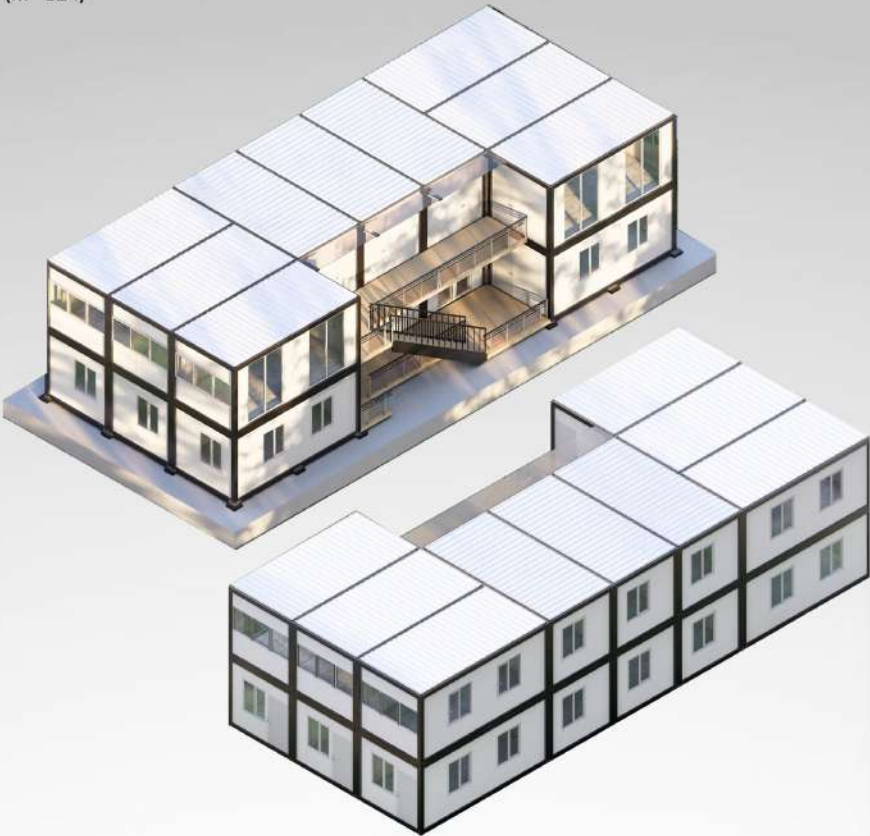
Conference Room  
(m<sup>2</sup> 162)



Conference Room

Number of Units	: 9
Dimensions of Each Unit	: m 2.80 × m 3 × m 6
Total Area	: m <sup>2</sup> 162
Net Weight	: 2500kg*9=22500kg
Facilities / Amenities	: Three Conference Rooms
Function / Usage	: Administrative
Price	: ...

Two-Storey Office  
(m<sup>2</sup> 324)



Two-Storey Office

Number of Units	: 18
Dimensions of Each Unit	: m 2.80 × m 3 × m 6
Total Area	: m <sup>2</sup> 324
Net Weight	: 2500kg*18=45000kg
Facilities / Amenities	: Bathroom + Kitchen
Function / Usage	: Administrative
Price	: ...



Staff Dormitory  
(m<sup>2</sup> 360)



Staff Dormitory

Number of Units	: 20
Dimensions of Each Unit	: m 2.80 × m 3 × m 6
Total Area	: m <sup>2</sup> 360
Net Weight	: 2500kg*20=50000kg
Facilities / Amenities	: Bathroom + Kitchen + Laundry + Rest Rooms + Hall
Function / Usage	: Dormitory – etc
Price	: ...

Administrative – Governmental  
(m<sup>2</sup> 450)



Administrative – Governmental

Number of Units	: 25
Dimensions of Each Unit	: m 2.80 × m 3 × m 6
Total Area	: m <sup>2</sup> 450
Net Weight	: 2500kg*25=62500kg
Facilities / Amenities	: Bathroom + Kitchen + Rooms + Hall
Function / Usage	: Camp – Mine – Petrochemical Facility, etc
Price	:

Flat Office  
(m<sup>2</sup> 4/4)



Flat Office

Number of Units	: 23
Dimensions of Each Unit	: m 2.80 × m 3 × m 6
Total Area	: m <sup>2</sup> 4/4
Net Weight	: 2500kg*23=57500kg
Facilities / Amenities	: Bathroom + Kitchen
Function / Usage	: Adminstrative
Price	: ...

Fast Food – Café	25
Car Showroom	26
Bazaar / Market – Booth	27
Supermarket	28

Fast Food – Café  
(m<sup>2</sup> 72)



Fast Food – Café

Number of Units	: 4
Dimensions of Each Unit	: m 2.80 × m 3 × m 6
Total Area	: m <sup>2</sup> 72
Net Weight	: 2500kg*4=10000kg
Facilities / Amenities	: Kitchen + Restroom + Hall + Terrace, etc
Function / Usage	: Café and Restaurant, etc
Price	: ...

Car Showroom  
(m<sup>2</sup> 216)



Car Showroom

Number of Units	: 12
Dimensions of Each Unit	: m 2.80 × m 3 × m 6
Total Area	: m <sup>2</sup> 216
Net Weight	: 2500kg*12=30000kg
Facilities / Amenities	: Restroom + Pantry + Hall, etc
Function / Usage	: Exhibition and Shop, etc
Price	: ...



Bazaar / Market – Booth  
(m<sup>2</sup> 198)



Bazaar / Market – Booth

Number of Units	: 11
Dimensions of Each Unit	: m 2.80 × m 3 × m 6
Total Area	: m <sup>2</sup> 198
Net Weight	: 2500kg*11=27500kg
Facilities / Amenities	: 22Booths
Function / Usage	: Shop – Market – Booth, etc
Price	: ...

Supermarket  
(m<sup>2</sup> 18)

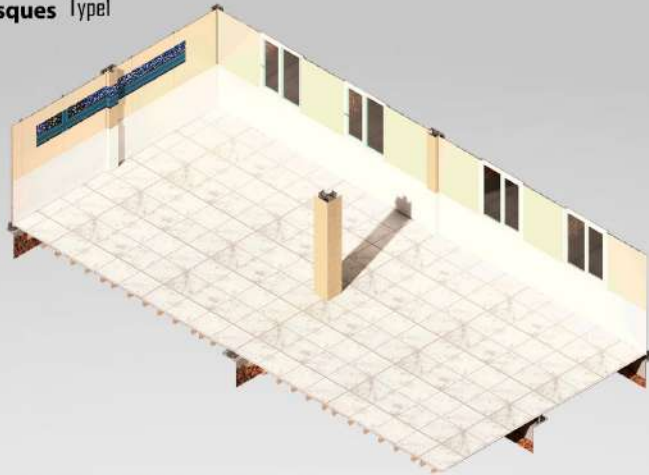


Supermarket

Number of Units	: 1
Dimensions of Each Unit	: m 2.80 × m 3 × m 6
Total Area	: m <sup>2</sup> 18
Net Weight	: 2500kg
Facilities / Amenities	: -
Function / Usage	: Supermarket
Price	: ...

Roadside Mosques	30-31
Restroom	32
Conference Hall	33

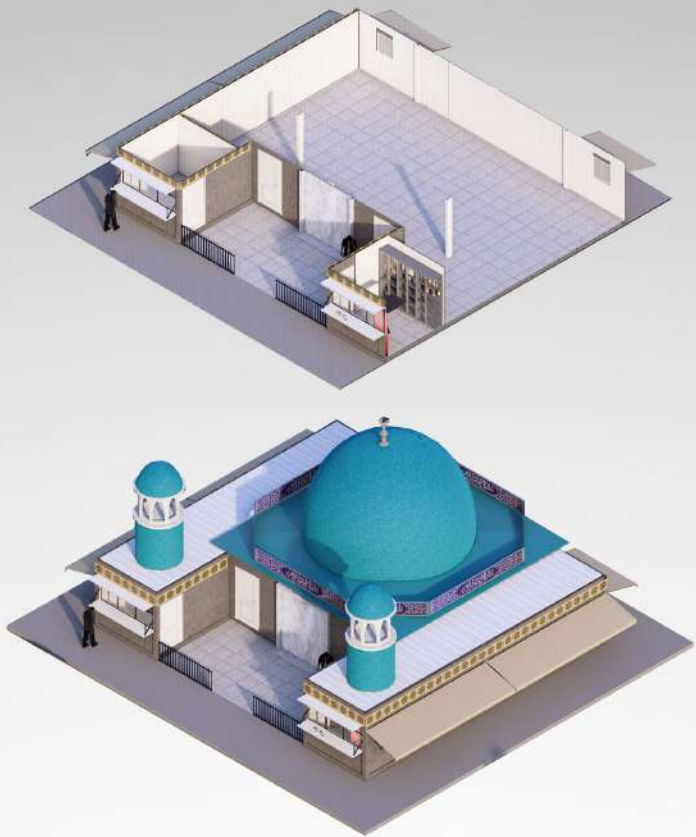
Roadside Mosques Type1  
(m² 90)



Roadside Mosques Type1

Number of Units	: 5
Dimensions of Each Unit	: m 2.80 × m 3 × m 6
Total Area	: m² 90
Net Weight	: 2500kg*5=12500kg
Facilities / Amenities	: Restroom
Function / Usage	: Mosque
Price	: ...

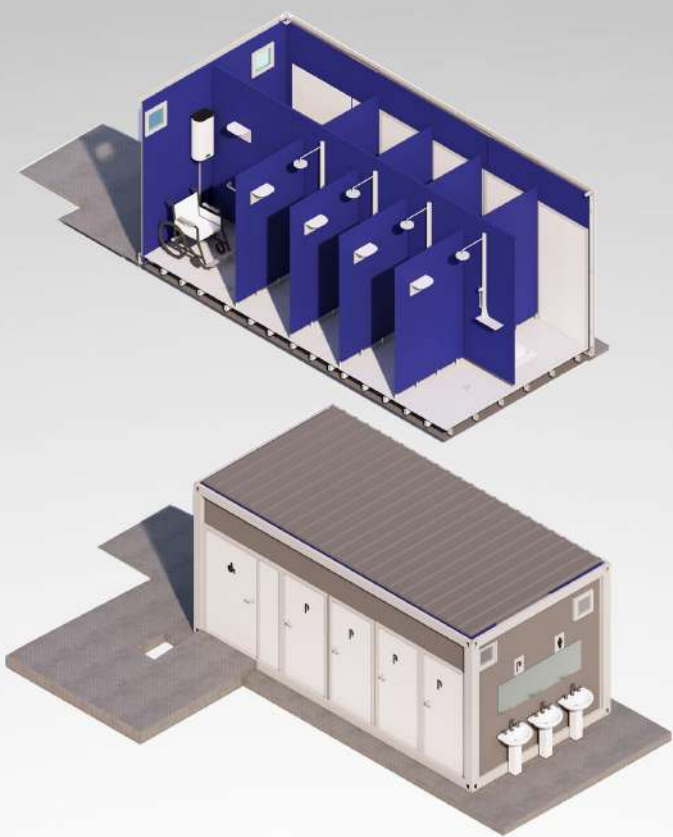
Roadside Mosques Type2  
(m<sup>2</sup> 126)



Roadside Mosques Type2

Number of Units	: 7
Dimensions of Each Unit	: m 2.80 × m 3 × m 6
Total Area	: m <sup>2</sup> 126
Net Weight	: 2500kg*7=17500kg
Facilities / Amenities	: Restroom
Function / Usage	: Mosque
Price	: ...

Restroom  
(m<sup>2</sup> 18)



Restroom

Number of Units	: 1
Dimensions of Each Unit	: m 2.80 × m 3 × m 6
Total Area	: m <sup>2</sup> 18
Net Weight	: 2500kg
Facilities / Amenities	: Toilets (Iranian style), Western Toilets, Showers, Washbasins, etc
Function / Usage	: Restroom and related facilities
Price	: ...



Conference Hall  
(m<sup>2</sup> 180)

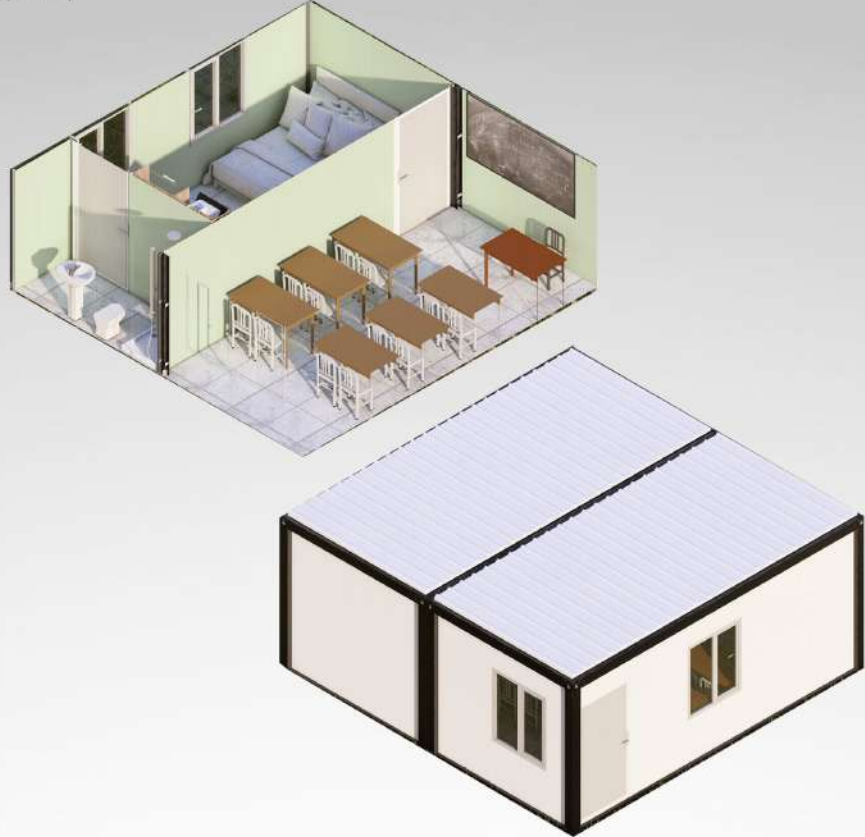


Conference Hall

Number of Units	: 10
Dimensions of Each Unit	: m 2.80 × m 3 × m 6
Total Area	: m <sup>2</sup> 180
Net Weight	: 2500kg*10=25000kg
Facilities / Amenities	: Toilets (combined Iranian & Western style),Kitchen,Entrance Lobby,ect
Function / Usage	: Conference and Meeting Hall, etc
Price	: ...

School (One Classroom)	-----	35
School (Three Classroom)	-----	36
School (Six Classroom)	-----	37

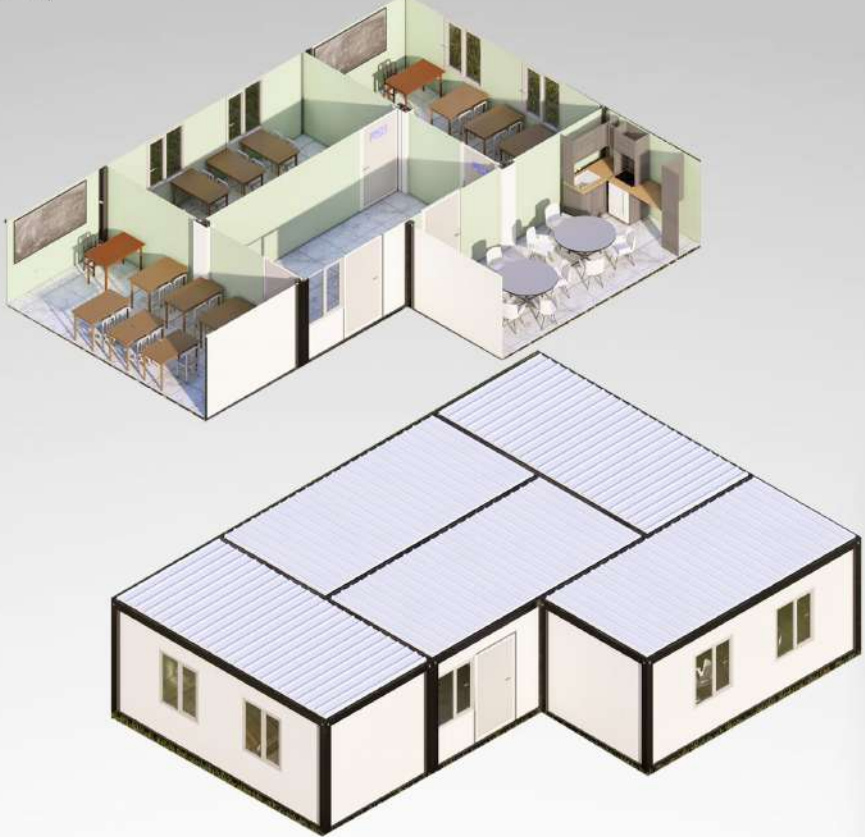
School (One Classroom)  
(m<sup>2</sup> 36)



School (One Classroom)

Number of Units	: 2
Dimensions of Each Unit	: m 2.80 × m 3 × m 6
Total Area	: m <sup>2</sup> 35
Net Weight	: 2500kg*2=5000kg
Facilities / Amenities	: Toilets (combined Iranian & Western style),Rest Room,Kitchen,Entrance Lobby,ect
Function / Usage	: Educational Facility
Price	: ...

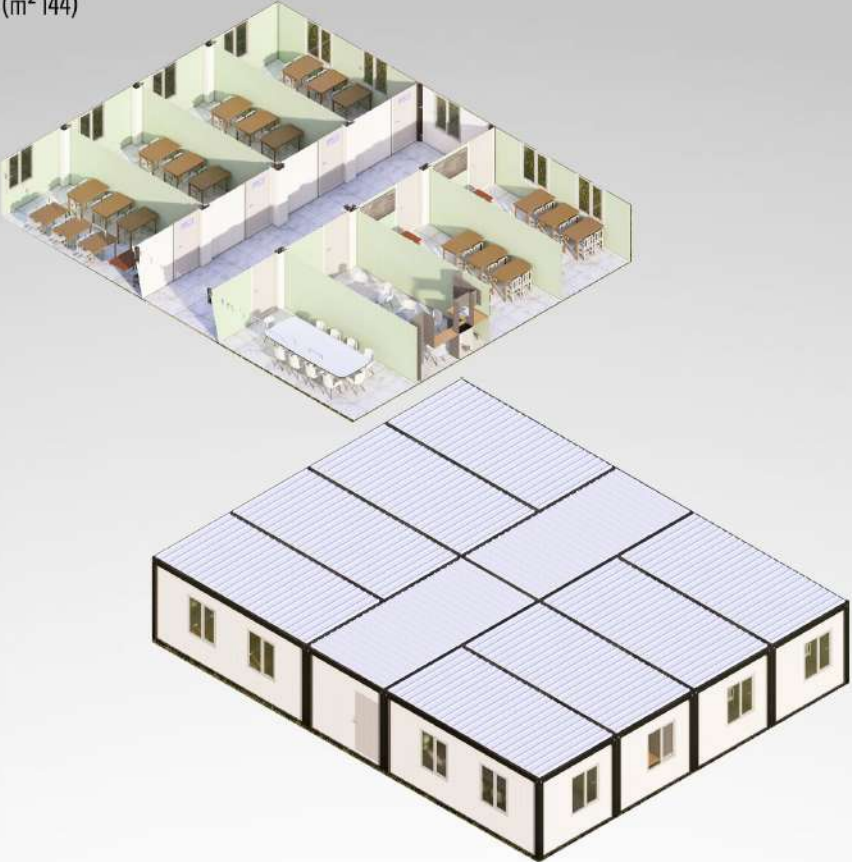
School (Three Classroom)  
(m<sup>2</sup> 90)



School (Three Classroom)

Number of Units	: 5
Dimensions of Each Unit	: m 2.80 × m 3 × m 6
Total Area	: m <sup>2</sup> 90
Net Weight	: 2500kg*5=12500kg
Facilities / Amenities	: Rest Room,Kitchen,Entrance Lobby,ect,
Function / Usage	: Educational Facility
Price	: ...

School (Six Classroom)  
(m<sup>2</sup> 144)



School (Six Classroom)

Number of Units	: 8
Dimensions of Each Unit	: m 2.80 × m 3 × m 6
Total Area	: m <sup>2</sup> 144
Net Weight	: 2500kg*8=20000kg
Facilities / Amenities	: Rest Room,Dining Room ,Kitchen,Entrance Lobby,ect,
Function / Usage	: Educational Facility
Price	: ...

Coastal Villa Complex	-----	39
Villa Complex	-----	40
Residential Complex on Pilotis	-----	41



**Residential Complex on Pilotis**  
Boomosi Island, Iran



**Residential Complex on Pilotis**

Residential Area	: One-Bedroom, Duplex ,m <sup>2</sup> 90 ,units 56 One-Bedroom and Two-Bedroom, Duplex ,m <sup>2</sup> 108 ,units 38 Two-Bedroom, Duplex ,m <sup>2</sup> 117 ,units 15 Three-Bedroom, Duplex ,m <sup>2</sup> 180 ,units 9 Four-Bedroom, Duplex ,m <sup>2</sup> 198 ,units 4 Each house has two parking spaces + Playground + Children's Park + Prayer Room
Facilities / Amenities	: + Café and Restaurant + Restroom + Locker Room and Shower + Security + Commercial Spaces + Public Parking + Shelter, etc
Total Land Area	: m <sup>2</sup> 24,339
Function / Usage	: Residential Complex, etc
Price	: ...

**Construction of Sales and Administrative-Financial Unit for Max Motor Company**  
Client: Mamoot Industrial Group

**Construction of Engineering-Administrative Building for Hera Institute**  
Client: Khatam al-Anbiya Construction Headquarters

**Construction of Main Entrance, Security Gate, and Reception for the Geological and Mineral Exploration Organization of Iran**  
Client: Ministry of Industry, Mine and Trade (MIMT)

**Construction of Administrative Unit for Sarmagostar Vira Factories**

**Construction of Mobile Marketing Unit for Hamrah Aval**  
Client: Hamrah Aval Company – Special for Arbaeen Ceremony

**Construction of Roadside Mosques**  
Client: Ministry of Oil and the Council for Policy-Making of Friday Prayer Imams of Iran

**Construction of Toilet Restroom Facilities**  
Project Type: Donated – Special for Arbaeen Ceremony

**Construction of Engineering-Administrative Unit for Construction Site Setup**  
Project Location: Velenjak and Saadat Abad – Tehran

**Construction of Café-Restaurant in Azam Hospital**  
Project Location: Qeshm

**Construction of Administrative Unit on the Rooftop of Morvosti Clinic**  
Project Location: Tehran

**Construction of Two-Storey Duplex Villa**  
Project Location: Polur Village

**Construction of Garden Cottage**

Project Location: Shahriar

**Design and Construction of Sales and Financial Unit for Termeh Restaurant**

Project Location: Lavasan

**Design and Construction of Cottage Inspired by American Examples**

Project Location: Existing at Abarsazeh Workshop – Tehran

**Construction of Luxury Hotel Suite for Tourist Facilities**

Project Location: Existing at Abarsazeh Workshop – Tehran

**Construction of the First Abarsazeh Brand Showroom**

Project Location: Tehran – Year of Completion **2023-2024**

For more information about our projects, please visit the Abarsazeh Faraji website at [www.abar-sazeh.com](http://www.abar-sazeh.com)

**Construction of Sales and Administrative-Financial Unit for Max Motor Company**

Client: Mamoot Industrial Group



**Construction of Engineering-Administrative Building for Hera Institute**

Client: Khatam al-Anbiya Construction Headquarters





**Construction of Main Entrance, Security Gate, and Reception for the Geological and Mineral Exploration Organization of Iran**  
Client: Ministry of Industry, Mine and Trade (MIMT)



**Construction of Administrative Unit for Sarmagostar Vira Factories**



**Construction of Mobile Marketing Unit for Hamrah Aval**  
Client: Hamrah Aval Company – Special for Arbreen Ceremony



**Construction of Roadside Mosques**  
Client: Ministry of Oil and the Council for Policy-Making of Friday Prayer Imams of Iran





**Construction of Toilet Restroom Facilities**  
Project Type: Donated – Special for Arbaeen Ceremony



**Construction of Engineering-Administrative Unit for Construction Site Setup**  
Project Location: Velenjak and Saadat Abad – Tehran



**Construction of Café-Restaurant in Azam Hospital**  
Project Location: Qeshm



**Construction of Administrative Unit on the Rooftop of Morvosti Clinic**  
Project Location: Tehran



**Construction of Two-Storey Duplex Villa**  
Project Location: Polur Village



**Construction of Garden Cottage**  
Project Location: Shahriar



**Design and Construction of Sales and Financial Unit for Termeh Restaurant**  
Project Location: Lavasan



**Design and Construction of Cottage Inspired by American Examples**  
Project Location: Existing at Abarsazeh Workshop – Tehran





**Construction of Luxury Hotel Suite for Tourist Facilities**  
Project Location: Existing at Abarsazeh Workshop – Tehran



**Construction of the First Abarsazeh Brand Showroom**  
Project Location: Tehran – Year of Completion



**Abarsazeh's First Participation in the 23 rd International Building Industry Exhibition**  
Purpose: Unveiling and Introducing the ASF Structure



**Abarsazeh's Second Participation in the 24 rd International Building Industry Exhibition**  
Purpose: Sales and Granting of Representation





### Abarsazeh's Third Participation in the 25 rd International Building Industry Exhibition

Purpose: Expansion of International Markets and Export of Economy Structures

Accompanied by Installation Manual



 **AbarSazehFaraji** **WWW.ABAR-SAZEH.COM** **021-88551420**  
**09205096100** **Factory** Tehran, West to East Azadegan Highway,  
after Firouzbahram, Abarsazeh Factories **Company** Tehran, North Sohrevardi, Kavosi Far Street,  
Mirzaei Zeinali Street, Siemens Building**ABAR SAZEH FARAJI**